



**EGATE-PRO**

**Quick Guide**

Ver. 1.0  
Release date: VII 2024  
Soft:  
Main module: v1.10.0  
ZigBee module: v1.0.13

Works with  
**ENGO SMART** App  
GET IT ON  
Google Play  
Available on the  
App Store

Powered By  
**tuya**

works with  
Hey Google alexa

Producer:  
Engo Controls sp. z o.o. sp. k.  
Rolna 4 st.  
43-262 Kobielice  
Poland

[www.engocontrols.com](http://www.engocontrols.com)

**Product Compliance**

This product complies with the following EU Directives:  
2014/53/EU i 2011/65/EU.

**Safety information**

Use in accordance with national and EU regulations.  
Use the device only as intended, keeping it in a dry  
condition. The product is for indoor use only. Please  
read the entire manual, before installation or use.

**Installation:**

Installation must be performed by a qualified  
person with appropriate electrical qualifications, in  
accordance with the standards and regulations in force  
in a given country and in the EU. The manufacturer  
is not responsible for non-compliance with the  
instructions.

**WARNING:**

For the entire installation, there may be additional  
protection requirements, which the installer is  
responsible for.

**Gateway description**



1. Antenna
2. Blue diode
3. Red diode
4. SMA antenna socket
5. RESET button
6. USB power socket type C
7. LAN Ethernet input (RJ45)



**Internet gateway operating modes**

The ZigBee gateway can communicate over the  
internet with the cloud in two ways:  
- 2.4 GHz Wi-Fi network  
- Ethernet network via LAN cable

**Installation**

**ATTENTION:**

A minimum distance between the router and gateway of 1m is recommended to avoid WiFi and Zigbee interference.



**ATTENTION:**

Connect the gateway to a 230V AC power supply, use the supplied plug and USB cable only.

**Installation of the gateway in the app**

Make sure your router is within range of your smartphone. Make sure you are connected to the Internet. This will reduce the pairing time of the device.

**STEP1 - DOWNLAD ENGO SMART APP**

Download the ENGO Smart app from Google  
Play or Apple App Store and install it on your  
smartphone.

Powered By

**ENGO SMART** App **tuya**

GET IT ON  
Google Play

Available on the  
App Store

**STEP2 - REGISTER THE NEW ACCOUNT**

To register a new account, please follow the steps below:

Click „Sign Up“ to create  
new account.

Enter your e-mail  
address to which the  
verification code will be  
sent.

Enter the verification  
code received in the email.  
Remember that you only  
have 60 seconds to enter  
the code!

Then set the  
login password.

**Introduction**

The Internet gateway meets the needs of the most demanding  
Engo Smart users. It is very easy to configure the network and  
the communication method can be chosen between Wi-Fi or  
LAN. An external antenna increases the range which ensures  
stable communication even in large flats or houses. It easily  
overcomes a reinforced concrete ceiling or several partition  
walls. The ability to migrate network settings to a new device  
without losing data gives the user security and convenience.  
The function of changing communication channel settings  
from the device interface, eliminates interference from other  
devices and ensures stable operation. Operation in the ZigBee  
3.0 standard allows the connection of compatible devices  
operating in the Tuya system. Works with Google Home and  
Alexa voice assistants. Housing suitable for mounting on a wall  
or as a free-standing unit.

**Product features**

- ZigBee 3.0 communication standard
- Wi-Fi 2.4 GHz communication standard
- Ethernet socket (RJ45)
- Compatibility with the application  
ENGO Smart (in technology Tuya Cloud)
- LEDs indicating operation status
- Stores smart rules
- 5V DC powered via USB type C

**Technical data**

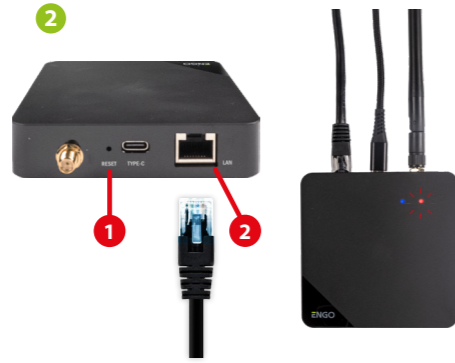
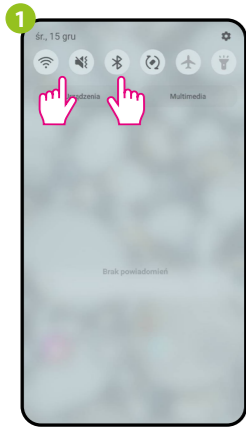
Power supply	5V DC USB type C
Communication	ZigBee 3.0 2,4GHz Wi-Fi 2,4GHz Ethernet (RJ45)
Dimensions	90 x 90 x 22mm

**Explanation for LED indicator**

Red diode	Blue diode	Device status
Lights on continously	Lights on continously	Immediately after switching on the power supply, both LEDs light up continuously for a few seconds or immediately after a factory reset of the device
Flashes slowly	Lights on continously	A few seconds after switching on, the gateway is ready for pairing with the application
Lights on continously	Does not lights	Connected to the cloud
Lights on continously	Flashes	ZigBee network is opened - searching for devices
Does not lights	Does not lights	No power supply

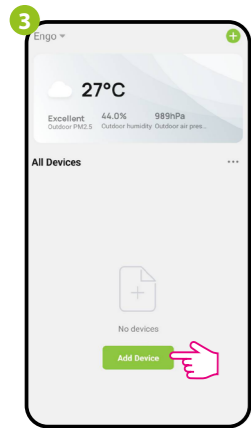
### STEP 3a - Installation of the Internet gateway via LAN cable

After installing the app and creating an account:

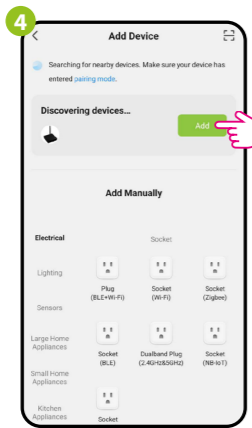


Make sure the device is connected to the power supply and to the Internet via the cable (2). Then press and hold the RESET button (1) (using the pin provided) for 10 seconds. The red LED must flash slowly, then the gateway is in pairing mode. If the red LED flashes quickly, then press the RESET button again for 10 seconds, wait a moment and make sure that the red LED flashes slowly.

On the mobile device, make sure that the ENGO Smart app has access to the permissions (Location, Bluetooth, Nearby devices). Then turn on Bluetooth and location. Connect to that 2.4 GHz Wi-Fi network to which you want to assign the gateway (Wi-Fi and wired Ethernet must be one network - from the same router).



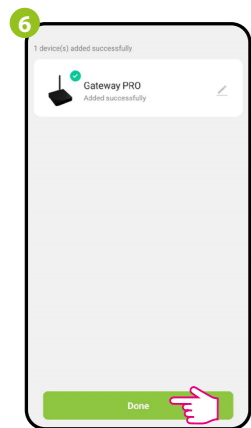
In the app, select: „Add Device“.



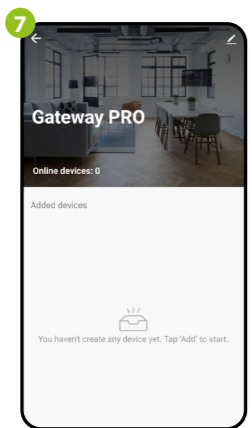
After finding the gateway, go „Add“



Wait for the app to configure the device.



Go „DONE“.

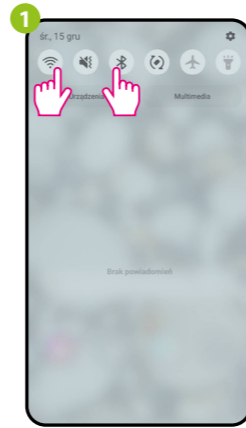


The gateway has been installed and displays the main interface. On the device, the red LED lights up continuously.



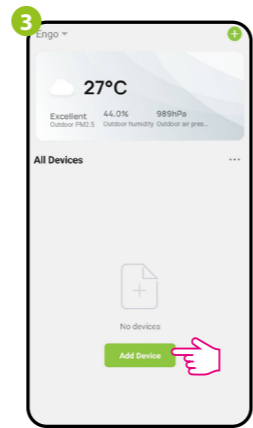
### STEP 3b - Installation of the Internet gateway using a 2.4 GHz Wi-Fi network

After installing the app and creating an account:

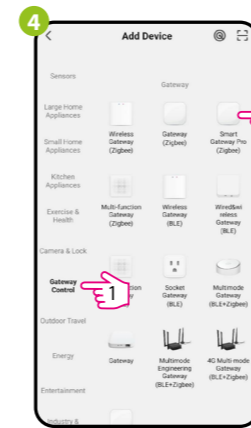


On the mobile device, make sure that the ENGO Smart app has access to the permissions (Location, Bluetooth, Nearby devices). Then turn on Bluetooth and location. Connect to that 2.4 GHz Wi-Fi network to which you want to assign the gateway (Wi-Fi and wired Ethernet must be one network - from the same router).

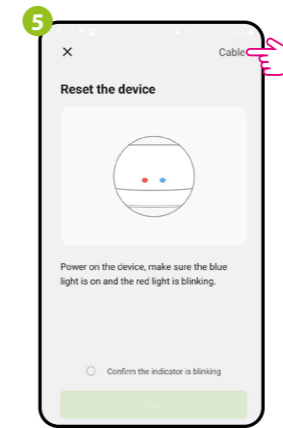
Make sure the unit is powered on. Then press and hold the RESET button (1) (using the pin provided) for 10 seconds. The red LED must flash slowly, then the gateway is in pairing mode. If the red LED flashes quickly, then press the RESET button again for 10 seconds, wait a moment and make sure the red LED flashes slowly.



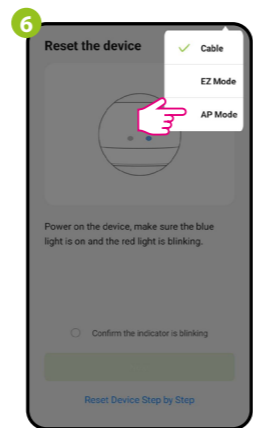
In the app, select: „Add Device“.



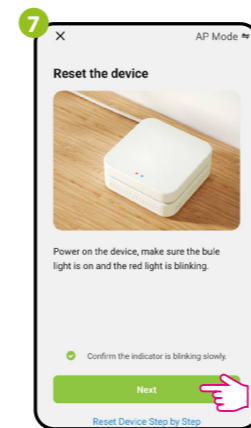
Go to the „Gateway Control“ tab, then select „Smart Gateway Pro (Zigbee)“.



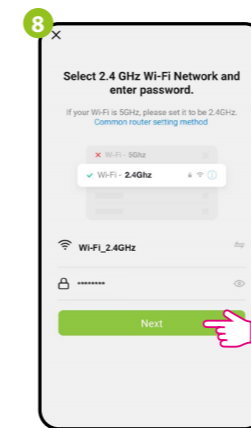
Click „Cable“.



Select „AP Mode“.

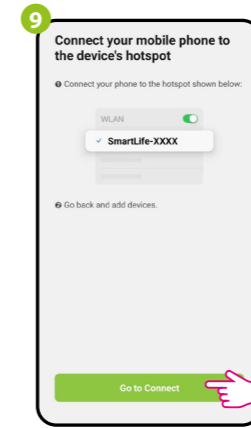


Check the required field and go „Next“.

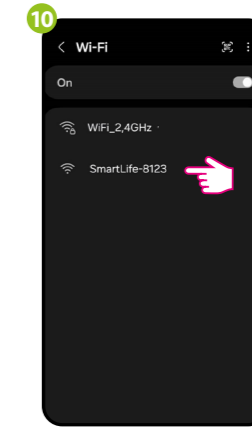


Select the Wi-Fi network in which the gateway will operate and enter the password of this network.

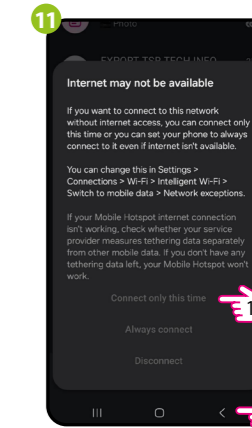
### STEP 3b - Installation of the Internet gateway using a 2.4 GHz Wi-Fi network



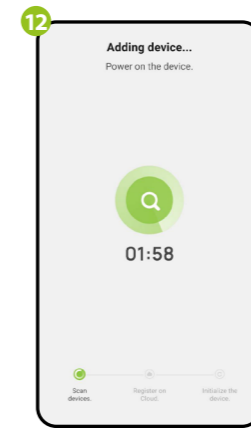
Click „Go to Connect“.



The device will go to the Wi-Fi network settings screen. Select the „SmartLife-XXXX“ network and connect to it.



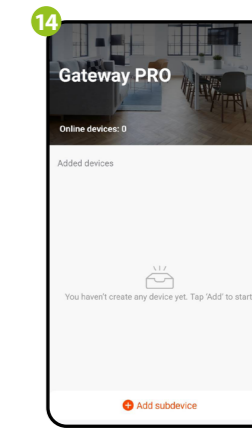
Once the network has been configured, select „Connect only this time“, then click „Back“.



Wait for the app to configure the device.



Go „DONE“.



The gateway has been installed and displays the main interface. On the device, the red LED lights up continuously.

### Factory reset

To restore the default settings of the device, press the RESET button (1) and hold it for approx. 10 seconds - until both LEDs light up. Then release the button, the universal internet gateway will restore the default (factory) values and the pairing process will begin.

